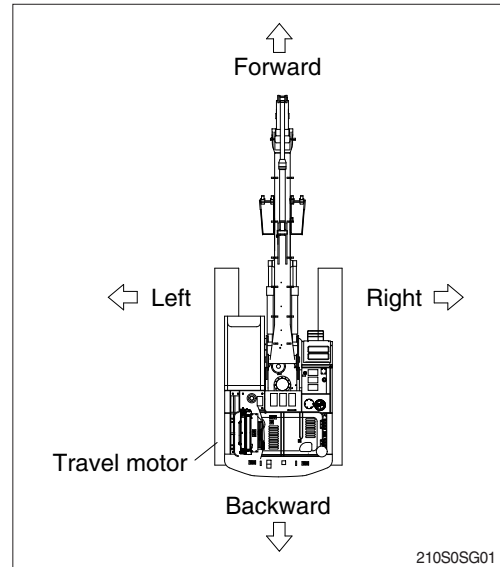


## 1. DIRECTION

The direction of this manual indicate forward, backward, right and left on the standard of operator when the travel motor is in the rear and machine is on the traveling direction.

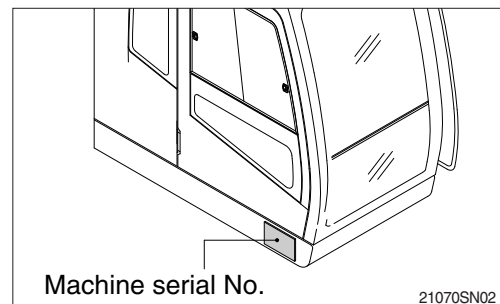


## 2. SERIAL NUMBER

Inform following when you order parts or the machine is out of order.

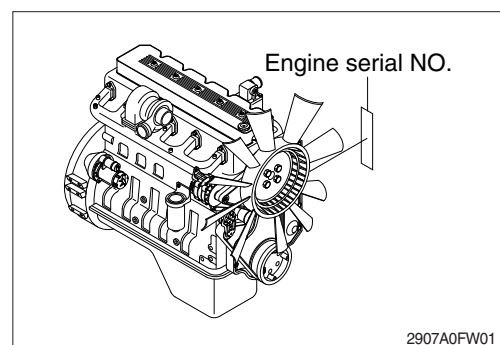
### 1) MACHINE SERIAL NUMBER

The numbers are located below the right window of the operator's cab.



### 2) ENGINE SERIAL NUMBER

The numbers are located on the engine name plate.



## 3. INTENDED USE

This machine is designed to be used mainly for the following work:

- Excavation work
- Loading work
- Leveling work
- Drainage work
- Lifting work
- Demolition work

※ Please refer to section, Efficient working method further details.

## 4. SYMBOLS

- ▲ Provides important safety warnings. Failure to follow these warnings could result in serious injury or death.
- △ Provides important instructions to prevent damage to the equipment.
- ※ Provides useful information for the operator.